
BitGuard Personal Firewall

Copyright© 2003 Danware Security A/S. All rights reserved

Document revision: 2003332

Please send comments to:

**Try Us Aps
Strandgade 26, 2. sal
DK-1401 Kobenhavn K
Denmark**

Tel: +45 32 57 86 77

Fax: +45 32 57 86 79

Email: support@tryus.dk

Web: www.tryus.dk

Installation

This chapter explains how to install *BitGuard Personal Firewall* on computers running a Windows operating system.

System Requirements

These system requirements apply when installing this version of *BitGuard Personal Firewall* on a computer:

Computer	Intel 80486 processor or higher or 100% compatible.
Memory	Operating system requirements plus additional 16 MB.
Platform	Windows XP Professional, Home Edition; Windows 2000 Professional; Windows ME, 98.
Disk Space	Requires less than 5 MB.
Communications	TCP/IP with Internet access.

Note: *BitGuard Personal Firewall does not support Windows 95, NT4 or any Windows servers.*

Before Installing

Read the *readme_en.txt* file that resides in the root directory of the *BitGuard Personal Firewall* CD. This file contains important general information and may contain update information that was not available when this quick guide was last edited.

Uninstall other personal firewalls.

Scan your computer with an updated anti virus product.

Save all data and shut down all running Windows applications.

Note: *To install BitGuard Personal Firewall, the computer must be connected to the Internet. If connected to the Internet by a dial-up connection, it must be running.*

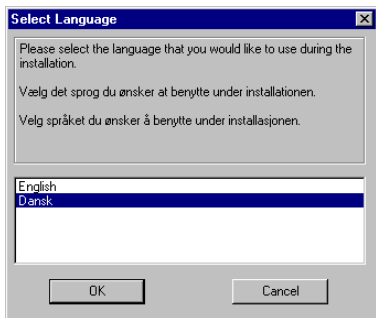
Installing

Insert the *BitGuard Personal Firewall* CD into the CD drive of your computer to display the *BitGuard Personal Firewall* window.

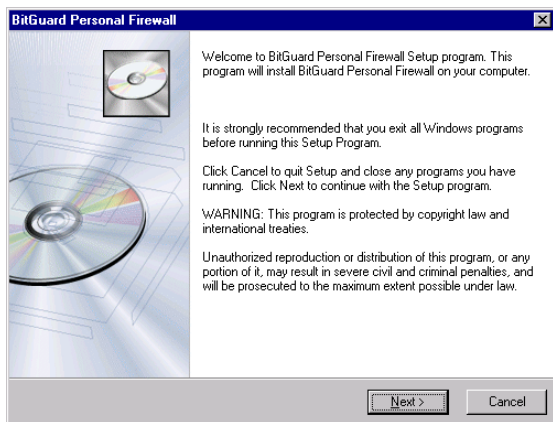
Installation

Note: If the BitGuard Personal Firewall window does not display automatically, navigate to the root directory of the BitGuard Personal Firewall CD and double-click **SETUP.EXE**.

Select *English* and *Install* to display this window:



Select *English* to use English installation windows and click *OK* to display this window:



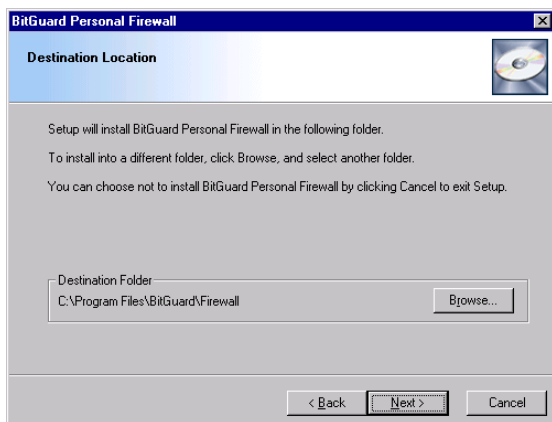
Click *Next>* to display this window:



Read the license agreement carefully.

[] I Accept the License Agreement: Check the box to enable the *Next>* button.

Click *Next>* to display this window:

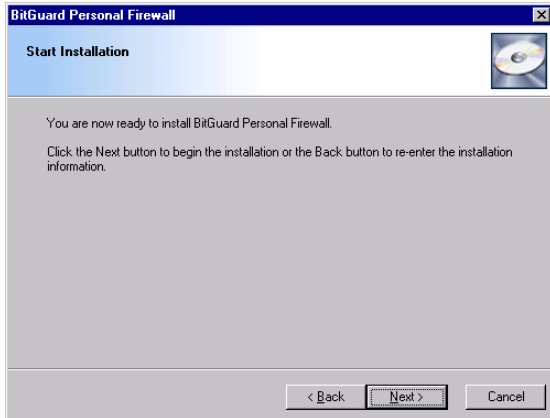


Destination Folder: The default installation folder path is displayed in the section (default: *C:\Program Files\BitGuard\Firewall*).

Installation

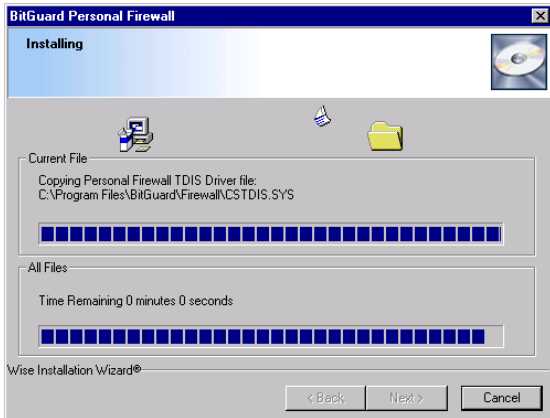
Browse: Click this button to display a Windows *Browse for Folders* window to browse for and select an installation folder, the path of which will be displayed in the section.

Click *Next>* to display this window:



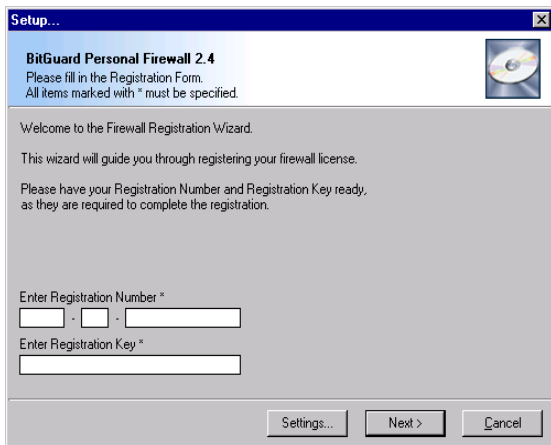
Click <Back to return to the previous window to change the *Destination Folder*.

Click *Next>* to display this window:



While copying files, progress is displayed by colored blocks in the progress bars.

While installing, the user license must be registered with the manufacturer to enable full firewall functionality. The first window of the registration wizard will be displayed:



Enter Registration Number: Specify in the fields the registration number you have received.

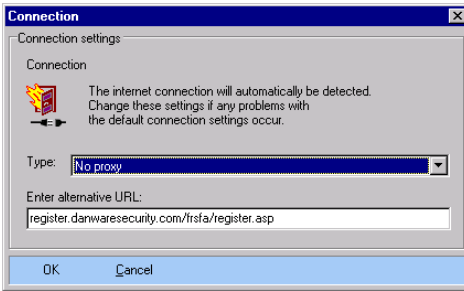
Enter Registration Key: Specify in the fields the registration key you have received.

Click *Next*> to submit you license for registration across the Internet.

Note: A window for specifying user details (user name and email address required) may be displayed.

Installation

Settings...: If you are unable to connect to the registration website, click this button to display this window:



This window enables specifying a proxy and an alternative registration Internet address.

Note: Change the settings in this window only if registration using the default settings fails.

Type: []: The drop-down box field displays the selected proxy option. The drop-down box list contains the options:

No Proxy: Select this option to not use a proxy (default selection).

Use Internet Explorer Proxy Settings: Select this option to use the proxy settings of Internet Explorer running on the computer.

Use Proxy <Proxy settings>: Consult with your system/network administrator on which proxy settings to use (format: <Proxy server name>:<Port number>).

Select an option in the list to display it in the field.

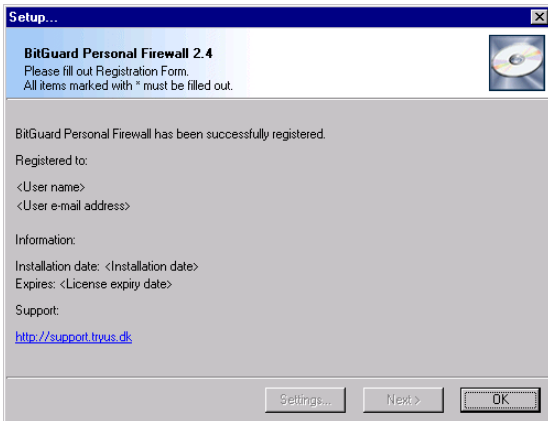
Enter Alternative URL: []: The field displays the default registration URL. Specify an alternative URL only if requested by your supplier.

OK: Click this button to apply selections.

Cancel: Click this button to continue without registering your license.

Note: If the firewall is installed with no valid registration, the access to other computers will be disabled. In this case, the registration wizard can be displayed from the firewall icon menu.

When the license has been successfully registered, registered license information will be displayed:



Registered to: Licensee name and email address.

Installation Date: Date of firewall installation.

Expires: Date of firewall license expiry.

Support: Support web address.

OK: Click this button to continue.

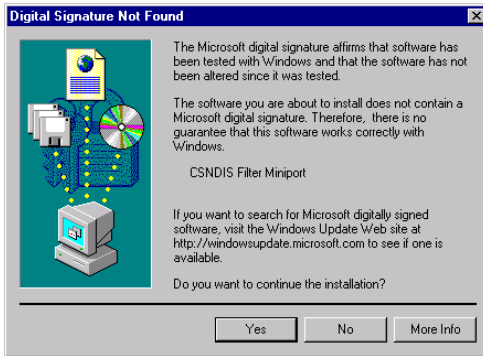
During installation on Windows XP or 2000, this window may be displayed several times:

Installation

Windows XP:

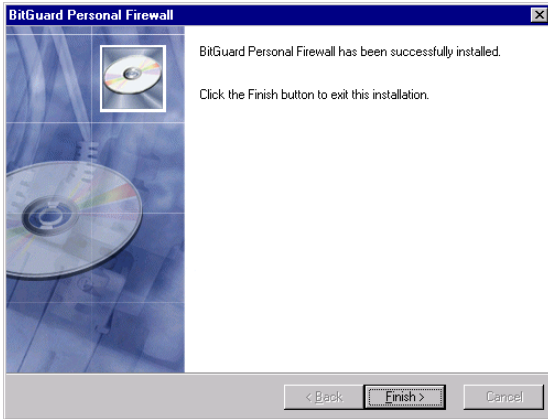


Windows 2000:

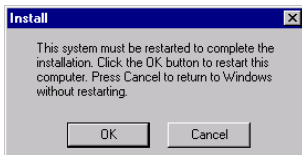


This window alerts you that a driver being installed does not have a Microsoft digital signature. The manufacturer is in the process of obtaining Microsoft digital signature for its drivers, but as this process takes some time, drivers may not have been signed. To complete the firewall installation, you must select *Continue Anyway* or *Yes*.

When the firewall has been successfully installed, this window will be displayed:



Click *Finish*> to leave the installation program and display this window:



OK: Click this button to close the window and restart the computer completing the installation.

Cancel: Click this button to close the window without restarting the computer. Until the computer has been restarted, the access to other computers will be disabled.

Initial Appearance

Initial Appearance

When *BitGuard Personal Firewall* is running on a computer, this icon is displayed in the task bar tray in the lower right corner of the screen:

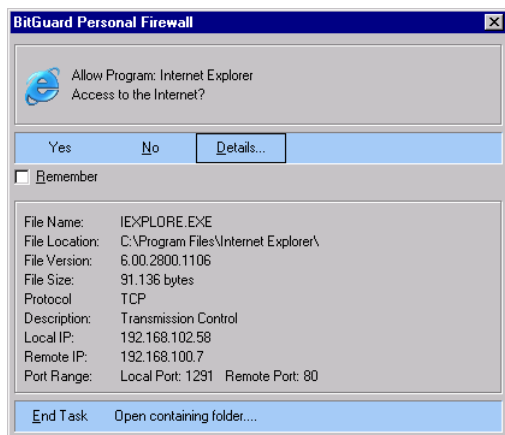


The firewall typically runs unnoticed on the computer until the user attempts to access another computer on the local area network (LAN) or the Internet.

LAN or Internet Access

Initially, the firewall does not allow any program on the computer access to other computers on the LAN or the Internet.

When you attempt to access a computer on the LAN or the Internet with a program for the first time, this window displaying only the top section including the *Yes*, *No* and *Details...* buttons will be displayed:



Yes: Click this button to allow LAN or Internet access.

No: Click this button to deny LAN or Internet access.

[] Remember: Leave this box unchecked to apply the *Yes/No* selection for this occasion only. Check the box to apply the *Yes/No* selection as the default setting on the firewall. Applying *Yes* will create the firewall setting *Allow Internet Access*. Applying *No* will create the firewall

setting *Deny Internet Access*. Additional options are available in the firewall *Configuration* window.

Details...: Click this button to expand the window displaying the lower section with details of the attempted action.

End Task: Click this button to kill the process of the attempted action after confirmation by the user, i.e. stop the program with which the action was attempted.

Caution: Do not kill a Windows process, as this can yield unexpected results.

Open Containing Folder...: Click this button to open Windows Explorer displaying the directory containing the program file.

Note: Some programs such as Internet Explorer will not gain access the first time clicking Yes because during the dialog interaction the program times out. Repeat the action to gain access.

Firewall Configuration

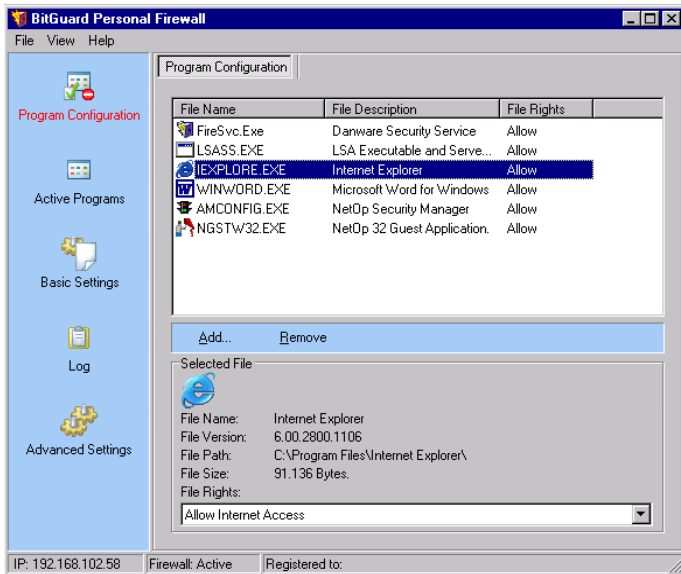
Note: No configuration by the user is necessary to start using the firewall. However, to achieve a customized functionality, configure the firewall.

Right-click the firewall icon in the task bar tray to display this menu:



This menu and windows accessed from it are explained in the manual that is available as a viewable and printable portable document format (PDF) file in the *BitGuard Personal Firewall CD MANUAL* directory.

Select *Firewall Configuration* or double-click the firewall icon to display this window:



Note: *If the firewall is installed with no valid registration, this command will display the registration wizard.*

In this quick guide, only basic program configuration will be briefly explained.

Program Configuration

In the left view selection bar, click *Program Configuration* to display the *Program Configuration* view in the right part of the window.

The pane displays programs as records in a table with the column contents:

File Name: Program icon and executable file name.

File Description: Description of the program functionality.

File Rights: File rights assigned by the firewall.

Add or remove programs in the pane by using the *Add...* or *Remove* buttons below the pane.

Select a record in the pane to display information on the file in the *Selected File* section below.

File Rights: : This drop-down box displays the right assigned to this program by the firewall. The drop-down box list contains these file right options:

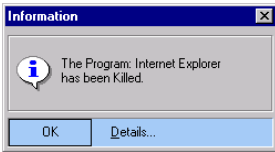
Allow Internet Access: The program can access other computers without prompting the user.

Ask for Internet (default): When attempting access to other computers with the program, the *Allow Program Access* window explained above will be displayed.

Deny Internet Access: When attempting access to other computers with the program, access will be denied, but the program will continue running.

Firewall Configuration

Kill Program: When attempting running the program, this window will be displayed:



Unrestricted Internet Access: The program can access other computers without port or protocol restrictions. IP address restrictions will apply.

Caution: This option that bypasses firewall restrictions should be used only for troubleshooting.

Select a file right option in the list to display it in the field, applying it to the selected program.